

**Technische informatie:**

Ex markering:  $\text{Ex II 2 G Ex eb ib mb IIC Gb}$   
 $\text{II 2 D Ex ib tb IIIC Db}$   
 Geschikt voor zone 1, 2, 21 en 22  
 Omgevingstemperatuur:  $-40^{\circ}\text{C} \leq T_a \leq +55^{\circ}\text{C}$   
 Beschermingsgraad: IP66  
 Spanning: 20.. 230 V AC/DC - 50/60 Hz.  
 Geluidsdruk: 60 dB(A) op 30 cm  
 Lichtsterkte: ca. 2000 mcd  
 Geschikt voor inbouw in Exe of Exd kast

Conform de standaards IEC60079 en EN60079

**Technical data:**

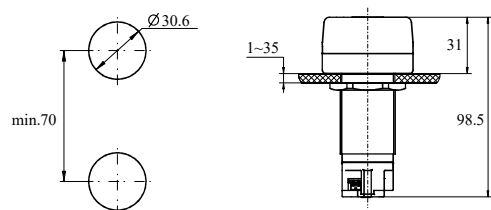
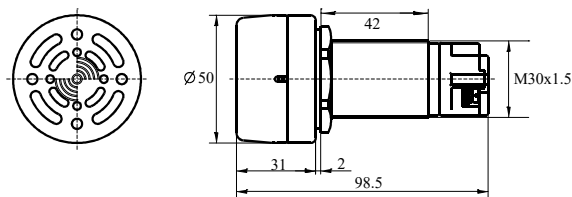
Ex mark:  $\text{Ex II 2 G Ex eb ib mb IIC Gb}$   
 $\text{II 2 D Ex ib tb IIIC Db}$   
 Can be used in zone 1, 2, 21 and 22  
 Ambient temperature:  $-40^{\circ}\text{C} \leq T_a \leq +55^{\circ}\text{C}$   
 Degree of protection: IP66  
 Voltage: 20/250 V DC/VAC - 50 / 60Hz.  
 Sound pressure: 60 dB (at 30 cm)  
 Lighting: aprox 2000 mcd  
 For mounting in Exe or Exd box

Meets the standards IEC-EN60079

Afbeelding Illustration	Omschrijving Description	Type
	Flitser, buzzer combinatie met rode lens 20 .. 250 V AC/DC  Flash type buzzer with red cover 20 .. 250 V AC/DC	Z1208 - F71
	Buzzer met zwarte lens 20 .. 250 V AC/DC  Buzzer with black cover 20 .. 250 V AC/DC	Z1208 - B71

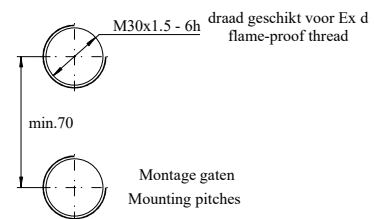
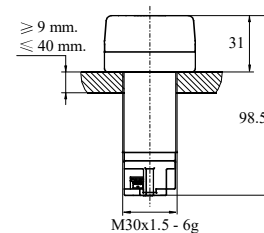
**Afmetingen  
Dimensions**

**Installatie methode voor Ex e kasten  
Installation diagram for Ex e boxes**



Montage gaten  
Mounting pitches

**Installatie methode voor Ex d kasten  
Installation diagram for Ex d boxes**



De Buzzer kan direct gemonteerd worden in een Ex d behuizing  
The buzzer can be screwed directly onto the Ex d boxes